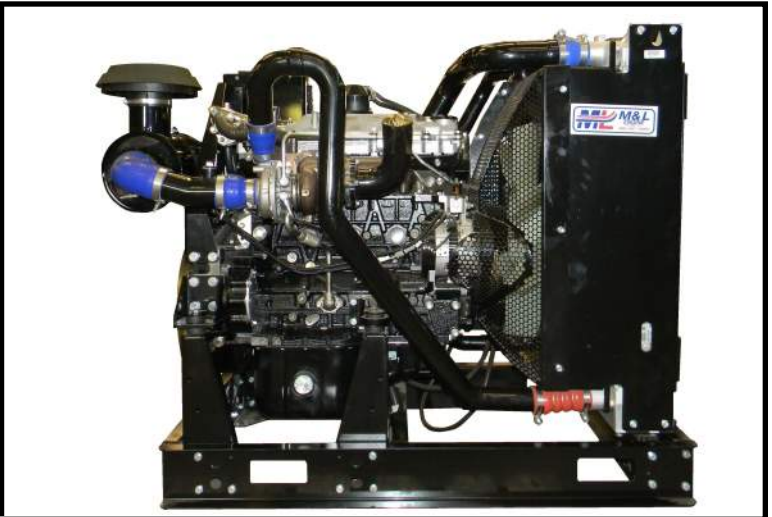


ISUZU INDUSTRIAL DIESEL OPEN POWER UNIT

203HP @ 2100RPM

Model number: 4HK1XYBW

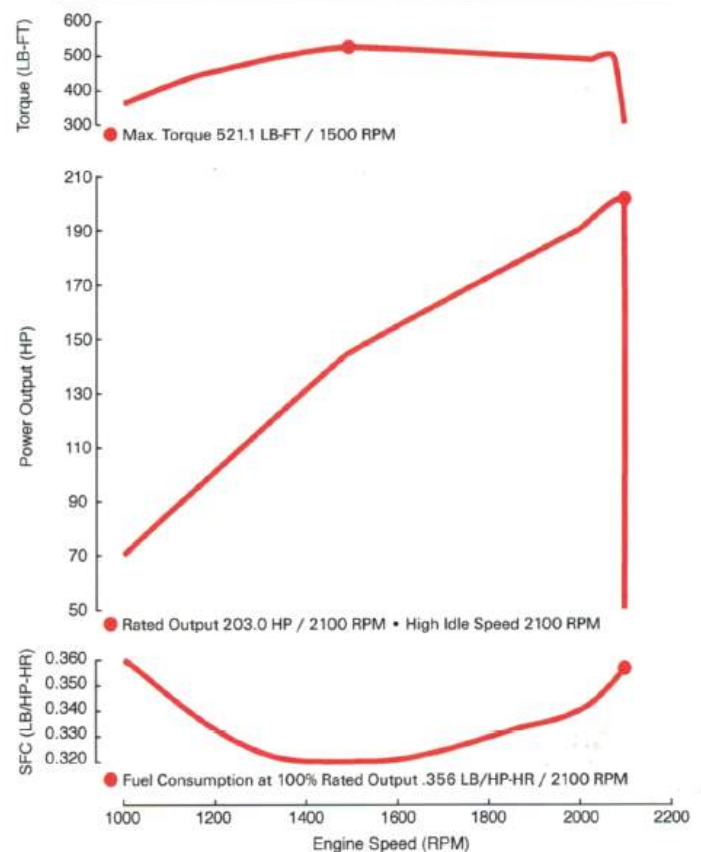
POWERED BY: 



Power Unit Set Specifications

- Isuzu 4HK1X Diesel 4 Cylinder 203 HP at 2100 RPM Turbo Charged, Charged Air Cooled Engine
- Isuzu Control Panel (Murphy Power View Display, Programmable Speed Setting, Throttle Control, and Key Switch)
- Safety Shutdown System (Low Oil Pressure & High Coolant Temperature)
- Common Rail Fuel System
- Radiator with constant torque clamps
- Fan Guard
- Painted Bent Steel Plumbing
- Industrial Exhaust Muffler
- Industrial Air Cleaner
- Engine Support Legs
- Steel Skid
- Throttle
- Oil and Fuel Filters with 500 Hour Service Intervals
- 24 Volt Electrics
- Owner's Manual
- 5 Year 5,000 Hour Engine Warranty
- SAE 3 Bellhousing / SAE 11.5" Flywheel

4HK1X Industrial Performance Curves:



Engine Specifications

Manufacturer	Isuzu
Engine Model	4HK1X
Cylinder Arrangement	4 in-line 4 cycle
Rated RPM	2100
Horse Power at Rated RPM (bhp)	203
Governor Type	Electronic
Frequency Regulation	3-5%
Air Cleaner	Replaceable Element

Lubrication System:

Oil Capacity w/out filter, qt.	21.66
Oil Filter Type	Spin-on

Fuel System:

Fuel Shutoff Solenoid	Electric
Fuel Pump	Electric
Fuel Pump Priming	Electric
Fuel Line Supply	5/16
Fuel Line Return	5/16

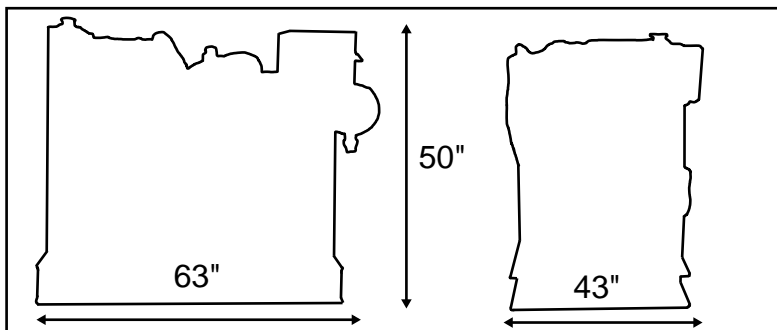
Cooling System:

Engine Coolant Capacity, qt	14.79
Radiator Coolant Capacity, qt	10.1
Fan Type	Puller

Approx Fuel Consumption, (GPH):

100% Load	8.05
75% Load	6.05
50% Load	4.03

Dimensions and Weights



- Open Power Unit Weight : 1698 lbs.

Standard Control Panel



Optional Remote Panel



Optional Murphy Auto Start Panel



Optional PTO Specifications

Manufacturer	W.P.T.
Model	WTD-11-230
Number of Drive Plates	2
Diameter of Clutch Drive Plate	11
SAE Size	3
Warranty	1 year 2,000 hour

Optional Accessories

- PTO
- Remote Panel Option with Wire Harness
 - Available in:
 - 6 foot
 - 10 foot
 - 20 foot
- Murphy Auto Start Panel Includes 10' Wire Harness with Optional Accessories:
 - 15 Watt Solar Panel
 - 24 Volt Battery Charged
 - Mechanical Float Switch
- (2) Racor Fuel / Water Separator
- (2) 24 Volt, Dual Batteries - Gr 31
- 24 Volt Battery Charger
- Battery Cables
- ESD Air Shut Down Valve
- 6' Manual Cable for ESD Valve
- Spark Arrestor
- Oil Drain Valve
- Air Starter
- Bearing Supported Stub Shaft
- Hydraulic Pump Adapter
- Aluminum Enclosure with Stainless Steel Hardware



M&L Engine, LLC

1212 Saint Charles St. Houma, LA 70360
(985) 857-8000 ♦ (800) 960-0068

www.mlengine.com email: sales@mlengine.com